

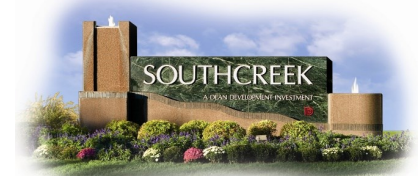
1,574 RSF

**Building XVI
7311 W. 132nd St.
Overland Park, KS 66213**



- * On-site leasing, management & ownership
- * Cost-effective building designs
- * Professional floor plan development
- * Custom interior design services
- * General contracting by Southcreek
- * Flexible expansion options
- * Convenient parking
- * Excellent location
- * Beautiful park settings
- * Commitment to your needs

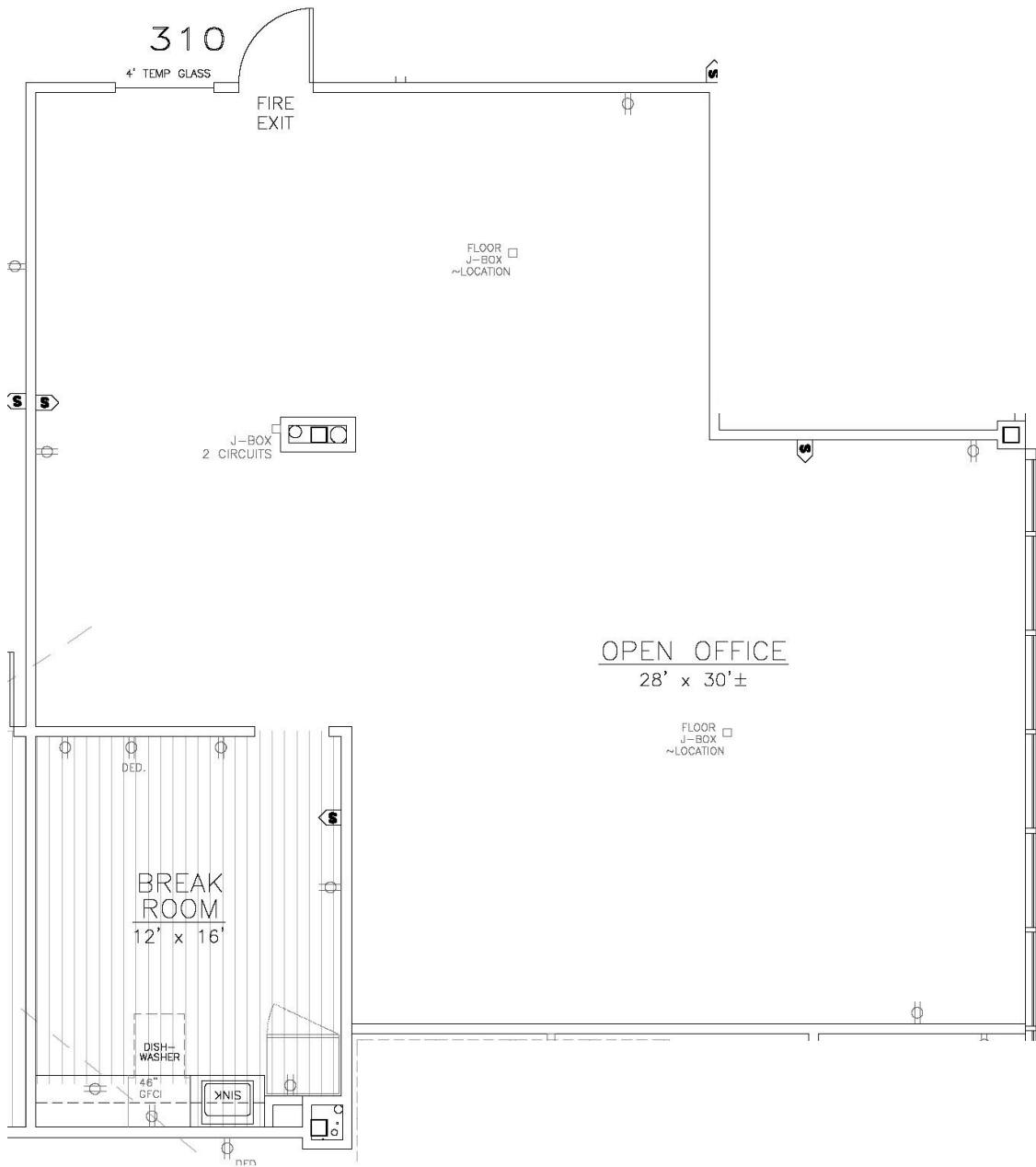
**New to Market
Available Now
Great Open Space
Floor to Ceiling
Glass
Break Area
Plenty of Parking
Close to Amenities
/Major Highways**



**Elaine Sicht
Kathy Woodward, SIOR
DDI COMMERCIAL, INC.**

7200 West 132nd Street
Suite 300
Overland Park, KS 66213
P: 913.685.4100
F: 913.685.1232

**Elaine@DDIRealty.com
KathyW@DDIRealty.com
DDICommercial@DDIRealty.com**



Building XVI
7311 W. 132nd St.
Overland Park, KS 66213

